

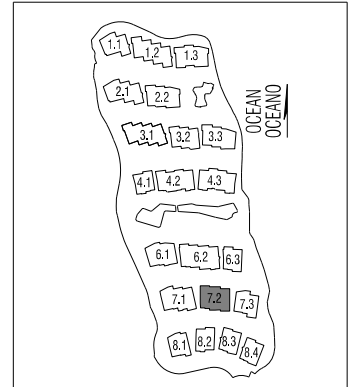
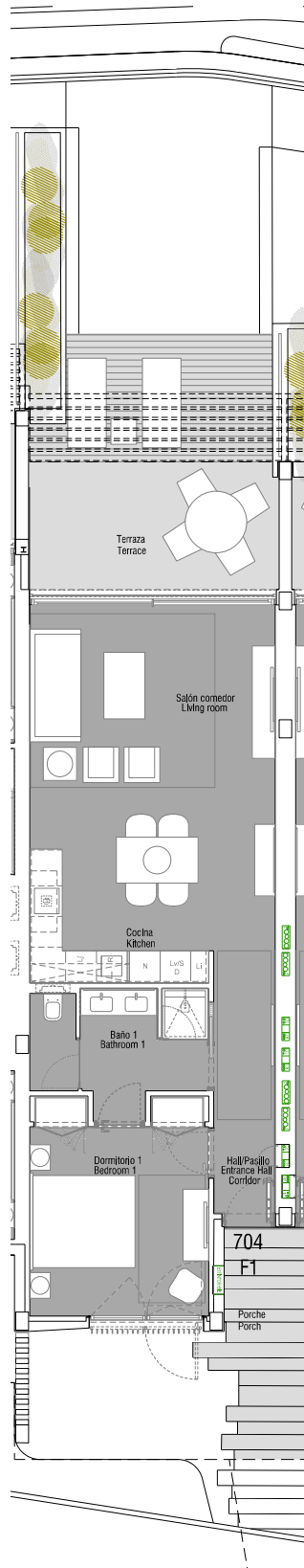
APT. 704

F1

ground floor / planta baja

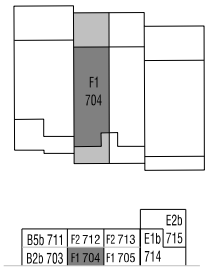
1 BEDROOM / 1 DORMITORIO

BUILT AREA / SUPERFICIE CONSTRUIDA: 83,70 m²



BLOCK 7.2 / BLOQUE 7.2

GROUND FLOOR / PLANTA BAJA



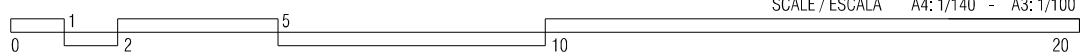
INDOOR USABLE AREA / SUPERFICIE UTIL INTERIOR: 62,00 m²

living room / salón-comedor:	22,40 m ²
kitchen / cocina:	12,00 m ²
bedroom 1 / dormitorio 1:	14,20 m ²
bathroom 1 / baño 1:	7,20 m ²
hall / distribuidor:	6,20 m ²

TERRACES / TERRAZA TOTAL: 26,50 m²

PRIVATE GARDEN / JARDIN PRIVATIVO: 20,05 m²

* Project and plans in draft phase and subject to change / * Proyecto en fase de redacción sujeto a modificaciones



SCALE / ESCALA A4: 1/140 - A3: 1/100